

Stamped and Bent Parts

We are a reliable development partner for high-precision stamped and bent parts and complex assemblies for automotive electronics. Our strength lies in the implementation of individual customer requirements, from development to series production. With our high-performance tools and special machine construction, we guarantee an efficient, safe, and rapid product-development process. Our products are manufactured with the highest precision and provided on tape and spool for fully automatic further processing.

Portfolio:

- Stamped, stamped-bent, drawn parts and inserts
- Construction components
- Pin and receptacle contacts
- Pin headers and electromechanical modules
- Die-cut stacks for rotors and stators
- In cooperation with partners we offer galvanized parts (strip and barrelplated parts)

Please let us know your requirements.



Hirschmann Automotive Pressfit Terminal

Stamping and Forming Technology:

Bruderer an Bihler machines
 Up to 160 t press force
 Up to 1800 strokes/min
 One- and two-stage production
 Progressive compound production
 Material thicknesses from 0.06 mm to 5 mm

Materials:

High-tech copper alloys
 Aluminium
 Different types of stainless steel (e.g. 1.4301 and 1.4310)
 Various steel qualities
 Pre-plating materials

Tool shop:

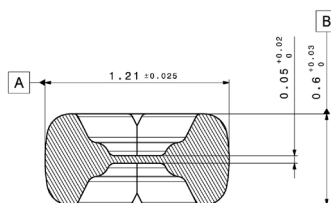
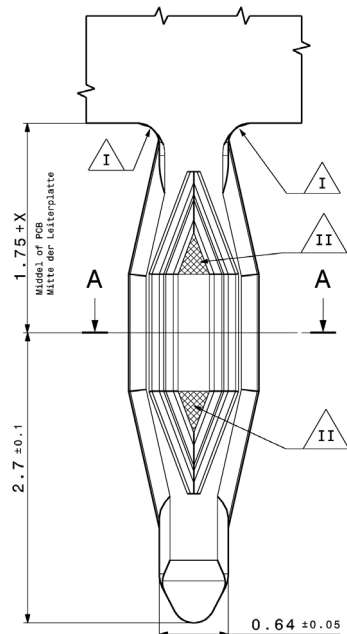
Stamping and bending tools
 Progressive tools
 Prototype construction

Hirschmann Automotive Pressfit Terminal (HAPT):

Flexible central web that folds out during the press-in process
 High spring forces keep the press-fit pin stable in the PCB
 Ambient temperature of -40°C to 150°C
 Validation in accordance with DIN EN 60352-5 and various customer standards

Customer-Specific Delivery Requirements:

Tape/spool
 Blister pack
 Bulk material
 Stamping tools and inline modules (finishing on site)



Our portfolio

Hirschmann Automotive GmbH
 T +43 (0)5522 307-0
 M info@hirschmann-automotive.com
 www.hirschmann-automotive.com
 shop.hirschmann-automotive.com



HIRSCHMANN
AUTOMOTIVE